

STUDY PROTOCOL

Open Access



Integral strategy to supportive care in breast cancer survivors through occupational therapy and a m-health system: design of a randomized clinical trial

Mario Lozano-Lozano^{1,2}, Lydia Martín-Martín¹, Noelia Galiano-Castillo^{1,3}, Francisco Álvarez-Salvago¹, Irene Cantarero-Villanueva^{1,2,3}, Carolina Fernández-Lao^{1,2,3}, Carmen Sánchez-Salado⁴ and Manuel Arroyo-Morales^{1,2,3*}

Abstract

Background: Technological support using e-health mobile applications (m-health) is a promising strategy to improve the adherence to healthy lifestyles in breast cancer survivors (excess in energy intake or low physical activity are determinants of the risk of recurrence, second cancers and cancer mortality). Moreover, cancer rehabilitation programs supervised by health professionals are needed due to the inherent characteristics of these breast cancer patients. Our main objective is to compare the clinical efficacy of a m-health lifestyle intervention system alone versus an integral strategy to improve Quality of Life in breast cancer survivors.

Methods: This therapeutic superiority study will use a two-arm, assessor blinded parallel RCT design. Women will be eligible if: they are diagnosed of stage I, II or III-A breast cancer; are between 25 and 75 years old; have a Body Mass Index > 25 kg/m²; they have basic ability to use mobile apps; they had completed adjuvant therapy except for hormone therapy; and they have some functional shoulder limitations. Participants will be randomized to one of the following groups: integral group will use a mobile application (BENECA APP) and will receive a face-to-face rehabilitation (8-weeks); m-health group will use the BENECA app for 2-months and will received usual care information. Study endpoints will be assessed after 8 weeks and 6 months. The primary outcome will be Quality of Life measured by The European Organization for Research and Treatment of Cancer Quality of Life Questionnaire Core and breast module. The secondary outcomes: body composition; upper-body functionality (handgrip, Disability of the Arm, Shoulder and Hand questionnaire, goniometry); cognitive function (Wechsler Adult Intelligence Scale, Trail Making Test); anxiety and depression (Hospital Anxiety and Depression Scale); physical fitness (Short version of the Minnesota Leisure Time Physical Activity Questionnaire, Self-Efficacy Scale for Physical Activity); accelerometry and lymphedema.

Discussion: This study has been designed to seek to address the new needs for support and treatment of breast cancer survivors, reflecting the emerging need to merge new low cost treatment options with much-needed involvement of health professionals in this type of patients.

Trial registration: ClinicalTrials.gov Identifier: NCT02817724 (date of registration: 22/06/2016).

Keywords: Breast, Neoplasms, Occupational therapy, Mobile applications, Quality of life

* Correspondence: marroyo@ugr.es

¹Department Physical Therapy, University of Granada, Granada, Spain

²Mixed University Sport and Health Institute (iMUDS), Granada, Spain

Full list of author information is available at the end of the article



Background

Cancer is one of the most incident diseases worldwide. Over 14 million new cancer cases occur every year, but are projected to reach approximately 22 million by 2030 [1]. Among all cancer types, breast cancer is the most commonly diagnosed cancer in women, and approximately 4.4 million women worldwide live with a diagnosis of breast cancer [2]. Fortunately, the survival rate is very encouraging; the estimated number of deaths from breast cancer is estimated to be less than one-third of new cases [1]. Developments in screening and improved treatments for breast cancer have led to improved survival, and it is beginning to be regarded as a chronic disease [3, 4]. This new perspective of the disease has led to a growing need for long-term treatments [4] with an integrative strategy that takes into account the patients' lifestyles and physical, cognitive and emotional impairments [5–7].

Regarding the importance of the patients' lifestyles (in physical activity and diet), the literature highlights the importance of maintaining healthy lifestyles to reduce the risk of recurrence, secondary cancers or death. There is strong evidence about the efficacy and safety of exercise and healthy diet to improve the patients' quality of life (QoL) [8, 9] and reduce the effects of cancer [10, 11]. Recent research reveals that even when patients know the benefits of interventions aimed at promoting energy balance among cancer survivors (in terms of intake and physical activity), it is unrealistic to expect that most of them, who have a strong sedentary habit, will comply with the current good practice guidelines [10, 12]. In addition, survivors report difficulties in adhering to and maintaining an appropriate lifestyle [12]. Consequently, this energy imbalance increases the risk of cancer recurrence [13] and, along with the functional limitations and emotional/occupational imbalance, reduces the QoL of breast cancer survivors (BCS) [14]. New strategies with a comprehensive approach of support must be developed to improve the adherence and motivation of these patients and to reduce the high cost involved in creating individualized exercise programs and diets [15]. Currently, technological support is a promising strategy that could improve issues, such as barriers of distance, time, cost and motivational aspects [16]. Telehealth systems, which are based on computers and mobile applications (m-health), offer a promising approach for both dietary and physical activity assessments [17] and the patients' motivation can be significantly increased through the immediate feedback provided by these systems [18]. A recent study has developed a mobile application to simultaneously collect data on diet and physical activity in adults [17], but, to our knowledge, no programs exist that simultaneously collect data on diet and physical activity in cancer patients

and provide immediate feedback with individualized recommendations.

In addition to the need to improve these patients' lifestyles, the patients may experience physical, cognitive and emotional impairments. The most common upper body symptoms reported by BCS are related to shoulder impairments [19–21], although much research has supported the practice of performing early exercises to avoid limitations of range of motion (ROM) in the shoulder [22, 23]. Moreover, cognitive impairment occurs in 10%–50% of these women [24, 25], and the emotional distress caused by shifts in social support and the fear of recurrence and death has also impacted women's wellbeing [26, 27]. The performance of daily tasks (such as activities in daily living, work, and leisure tasks) are influenced by all these complications and, along with unhealthy lifestyle habits, affect the overall QoL [22].

In this sense, occupational therapy is an effective intervention to improve the patients' QoL, ROM or distress in different conditions [28–30]. However, to our knowledge, the only published randomized controlled trial evaluating occupational therapy in BCS is an intervention aimed at reducing the limitations of rural patients in their daily activities [31]. The authors found that a telephone-based problem-solving occupational therapy intervention program was feasible and had positive effects on the patients' function, QoL and emotional state. However, the study had methodological limitations, such as a small sample size and intervention bias. Other previous studies with the aim of evaluating the effects of occupational therapy on cancer patients had several limitations, such as including any type of cancer [32–36], the use of a non-randomized controlled trial (RCT) approach [33–35, 37, 38], and pilot studies [31, 36] involving very few patients [31, 33, 36–38].

This study arises from the need to establish an integrative and multidisciplinary strategy to support BCS by taking advantage of the features of these two proposals: first, the functionality and independence provided by a mobile application that patients can use when and wherever they choose; secondly, the imperative need for a supervised face-to-face intervention by a health professional, due to the inherent characteristics of these patients. Our study aims to compare the clinical efficacy of an m-health lifestyle intervention system alone versus an integrative strategy that also includes a face-to-face intervention in BCS. In this manuscript, we describe the design and methods of the study.

Methods

Objectives

The main objective of this RCT is to assess if an integrated strategy that uses an m-health system in addition

to a face-to-face treatment is better than the use of the m-health system alone to improve the immediate and long-term QoL of BCS. Second, we want to examine the effects of the interventions on the overall impact on functionality, body composition, anxiety and depression, physical measurement, lymphedema and cognitive function. The integral group will use the m-health and receive three occupational therapy sessions each week for an 8-week period. We will also study the effect of a 24-week period without rehabilitation on the studied variables. We hypothesize that support care based on an Occupational Therapy-supervised rehabilitation program will promote functionality and the combination with the mobile system will improve the patients' lifestyles and QoL, reduce distress, and improve cognitive function and arm mobility.

Research design and methods

The present study is a parallel group, assessor-blind, superiority RCT that will be conducted using assessments at baseline and immediately after the 8-weeks intervention. Follow-up measurements will be collected for 24 weeks after the end of the 8-week intervention period, resulting in a total trial data collection period of 32 weeks. We will use two separate assessment days to avoid fatigue in patients. In Table 1 is shown the study assessment schedule.

Participants

A total of 80 eligible (see inclusion criteria below) BCS will be randomized into the integral group ($N = 40$) or the m-health group ($N = 40$). For feasibility, the study is conducted in three waves. During the first year of the study (from January to December 2016), we will prepare protocols, establish the measurement techniques, and enrol the first 25 women in the study. At the beginning of the second year of the study (between January and April 2017), we will enrol an additional 30 women, and in the third stage, we will enrol the remaining 25 women. In summary, the target sample size of 80 BCS will be achieved in these 3 waves.

The integral group will receive the m-health plus an 8-week occupational therapy onsite program, and the m-health group will only use the app. Participants will be enrolled in this study by oncologists from the Hospital Virgen de las Nieves (Breast Unit) and the Hospital Clínico San Cecilio, Granada (Spain). The Research Ethics Committee of the province of Granada approved this study.

Eligibility criteria

Eligible women require: 1) to be between 25.0 and 74.9 years-old, 2) to be diagnosed of stage I, II or IIIA breast cancer, 3) to have medical clearance of

Table 1 Study assessment schedule

Assessment	Baseline	Post-intervention (8 weeks)	Follow – up (24 weeks)
Informed Consent	x		
Day 1 testing			
Sociodemographic data	x		
Anthropometric data, pressure/rate heart	x	x	x
Accelerometry (1 week)	x	x	x
Body Composition (DEXA)	x	x	x
Minnesota	x	x	x
Self-efficacy Physical Activity questionnaire	x	x	x
EORTC QLQ-C30	x	x	x
EORT QLQ-BR23	x	x	x
Day 2 testing			
WAIS-IV ^a (subtest)	x	x	x
Trail Making Test (TMT)	x	x	x
Handgrip strength	x	x	x
Lymphedema	x	x	x
Hospital Anxiety and Depression Scale	x	x	x
DASH	x	x	x
Goniometry	x	x	x

^aWorking memory and processing speed subtest

participation, 4) to be overweight or obese, according to the *Spanish Society for the Study of Obesity* (SEEDO) [39], 5) to have basic ability to use mobile apps or living with someone who has this ability, 6) completion of adjuvant therapy except for hormone therapy, 7) to have some functional or ROM limitations measures by goniometry and the Disabilities of the Arm, Shoulder and Hand (DASH) questionnaire, and 8) to have signed informed consent and have interest in improving lifestyle.

The exclusion criteria were defined as follows: history of cancer recurrence, to have had chronic disease or orthopaedic issues that would interfere with ability to participate in this rehabilitation program, or to have had uncontrolled hypertension (diastolic pressure > 95 mm Hg).

Outcome measures

The primary outcome measure is QoL. The secondary outcome variables include body composition, active range of motion (AROM), functionality, anxiety and depression, and cognitive function. Other variables of interest include muscular strength and free-living physical activity.

Primary outcome measure

Quality of life: *The European Organization for Research and Treatment of Cancer Quality of Life Questionnaire Core 30* (EORTC QLQ-C30) version 3.0 [40]: We will use the EORTC QLQ-C30 to assess QoL. This questionnaire is one of the most widely used instruments to measure QoL in cancer patients. The QLQ-C30 is composed of both multi-item scales and single-item measures, as well as five functional scales, three symptom scales, a global health status/QoL scale, and six single items. The scores must be averaged and linearly transformed to obtain a range of scores from 0 to 100, with a higher score representing a greater response level. Thus, a high score for a functional scale represents a healthy level of functioning and a high score for the global health status represents a high QoL, but a high score for the symptom scale represents a high level of symptomatology [41]. The test/retest reliability is high for all scales, ranging from 0.82 to 0.91 [40].

The European Organization for Research and Treatment of Cancer Breast Cancer-Specific Quality of Life Questionnaire (EORTC QLQ-BR23) [42]: This questionnaire is a breast cancer module of the EORTC QLQ-C30 that contains 23 items rated on a four-point scale ranging from 1 (not at all) to 4 (very much). The items assess the side effects of therapy, arm symptoms, breast symptoms, body image, and sexual function. Additionally, there are single items assessing sexual enjoyment, anxiety caused by hair loss, and future outlook. The scores range between 0–100 points. The procedure for scoring the breast cancer module is the same as the EORTC QLQ-C30 [41]. For scales evaluating function, a higher score represents a higher level of functioning. For scales evaluating symptoms, a higher score indicates more severe symptoms. The reliability has been shown to be high to moderate (Cronbach's α ranged between 0.46 – 0.94) [42].

Other outcome measures

Body composition

Height and weight will be measured. Body mass index, fat mass, lean body mass, abdominal adipose tissue and bone mineral density will also be assessed by conducting Dual-energy X-ray absorptiometry (DXA, Discovery densitometer from HOLOGIC, QDR 4500 W) using protocols reported in previous studies [43, 44]. This assessment tool has previously been used in breast cancer patients [45, 46].

Muscular strength

The handgrip strength test will be assessed using a digital dynamometer (TKK 5101 Grip-D; Takey, Tokyo, Japan). Following the protocol described by Ruiz-Ruiz et al. [47], the optimal grip span will be determined by a simple algorithm to adapt the dynamometer. Throughout

the whole test, BCS will be in a bipedal position; they have to put their arm in complete extension without touching any part of their body [18], repeating the test three times with each hand, alternately. There will be a delay of one minute between each test. The mean of the three tests will be used for the main analysis. This measurement has been demonstrated to be valid and reliable [48].

Upper body functionality

The disability of the arm, shoulder and hand (DASH) questionnaire: the American Academy of Orthopedic Surgeons introduced the DASH questionnaire as a specific instrument to measure upper extremity functionality [49]. It is one of the most extensively used tools [50]. Of the 30-items that are included in the DASH questionnaire: 21 items ask about the degree of difficulty in physical activities; 5 items ask about the severity of some pain symptoms; and the final 4 items ask about other activities such as social activities, sleep, work or self-image. The impact of the symptoms on each activity is also assessed. The scale score ranges from 0 to 100 points; the higher the score, the greater the disability [51]. The reliability of the Spanish version has a Cronbach's $\alpha = 0.96$ [52].

Active range of motion (AROM)

Shoulder AROM measurements will be obtained using a standard, two-armed goniometer, which is described as the clinical gold standard [53]. The patients will be asked to actively move their arms as much as they can to obtain measurements (in degrees) of flexion, extension, abduction, internal rotation and external rotation of the shoulder [23]. The movement will be validated by the interviewer and motion compensation will be limited to avoid overestimating the scores.

Cognitive function

Wechsler Adult Intelligence Scale (WAIS-IV): The WAIS-IV is an intelligence test designed to measure cognitive ability in adults and older adolescents and provides the most advanced adult measure of cognitive ability [54]. WAIS-IV subtests will be administered and scored according to standardized procedures [55]. For feasibility issues and because specific subtests provide information on a specific cognitive function (and can be used separately [55]), we will use two of the four index scores that compose the test: the Working Memory Index (WMI) and the Processing Speed Index (PSI). The WMI includes two subtests, Arithmetic and Digit Span, and the PSI also includes two subtests, Digit Symbol-Coding and Symbol Search.

The Trail Making Test (TMT) measures the flexibility of thinking using a visual-motor sequencing task and is one of the most important neuropsychological tests,

providing information on speed of processing, visual search, mental flexibility, scanning and executive functions [56]. It is formed by two subtests. TMT-A requires the participant to draw lines that sequentially connect several encircled numbers (1 to 25) distributed on a sheet of paper. TMT-B is similar in requirements, but in this case, the participant must alternate between numbers and letters (e.g., 1, A, 2, B, 3, C, etc.). The score is based on the amount of time required to complete the task.

Anxiety and depression

The Hospital Anxiety and Depression Scale (HADS): This scale consists of 14 items with two subscales (seven items for anxiety and seven for depression) and a score which ranges from 0 to 21 for each subscale. The questionnaire contemplates a cutoff point of 11 or above to consider anxiety and depression conditions [57, 58].

Physical fitness

Short Version of the Minnesota Leisure Time Physical Activity Questionnaire (VREM) [59]: This questionnaire is a short version of the original Minnesota questionnaire [60] and is composed of 5 items. It asks for the period in a typical week that the participants perform routine housework activities (cleaning house and go shopping on foot). In addition, it asks about activities performed during the last month or in a typical month for the other items, such as walking, working in the garden, playing sports or dancing and climbing stairs. Finally, energy expenditure is calculated (in METS-min/14 days) and the participant is classified from sedentary to very active according to their energy expenditure [59].

Self-Efficacy Scale for Physical Activity (EAF): The EAF is a validated instrument that determines the participants' beliefs about their own abilities to perform physical activities (self-efficacy for physical activity). It also allows us to identify the barriers and limitations that prevent the user from practicing this behaviour and the strength they require to perform regular physical activity. The EAF consists of three domains: scheduled physical exercise, physical activity in daily activities and walking. A total of 39 items are rated from 0 to 10; the higher the score, the greater the ability to perform the activity [61, 62].

Accelerometry

Accelerometry will be used to obtain data about physical activity and sedentary time for each participant, following a previously published protocol for usage and analysis [63]. A pre-programmed tri-axial accelerometer (ActiGraph GT3X+, Pensacola, FL, US) and a daily questionnaire will be given to BCS. The participants will wear the accelerometer for 8 consecutive days. They will be instructed to wear the accelerometer on their lower back for the whole day (including when sleeping) but to take it

off during aquatic activities. They will also receive an information sheet with detailed instructions. Participants will be included in the main analysis if the device records data for at least 4 days over a period of at least 10 h each day. Data will be collected at intervals of 1 min. Nonwear periods (intervals of 60 consecutive minutes with zero counts) and the first day of wearing the device will be excluded from analyses. Accelerometer data will be downloaded to the same computer used to initialize them [18].

Lymphedema

We will measure changes in size or volume of the upper limbs to diagnose lymphedema. An inextensible flexible tape 0.5 cm wide x 2 m long with an accuracy of 0.1 cm will be used following the protocol using in some previous studies [18, 64], which has been shown to be valid and reliable [65, 66].

Sample size

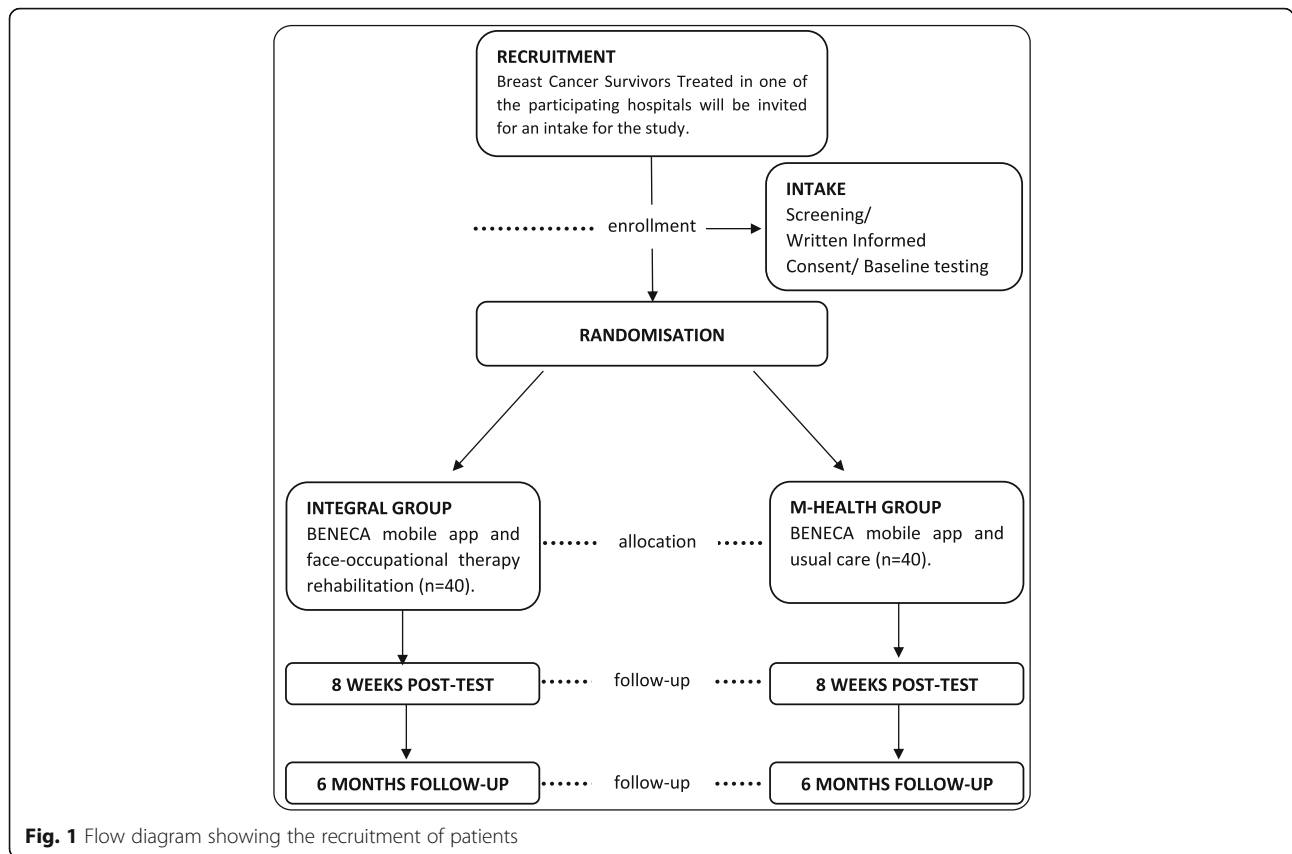
The sample size and power calculations for this trial were obtained through overall Health-Related QoL (HRQoL) using EORTC QLQ-C30 version 3.0 [40], and taking into account previously reported data [67] a minimally important difference from 5 to 10 points was considered. Assuming that integral group increase HRQoL in BCS in compared with m-health group [18] we can detect differences of at least 5% with a power of 90% and an α of 0.05 with two groups (Integral group and m-health group) of 36 participants assuming similar standard deviation (approximately 7 points). A maximum loss at follow-up of 10% will be allowed to face a possible drop-out rate [9]. Hence, we will recruit 80 BCS (40 in each group). Fig. 1 shows the flow diagram of the study participants.

Randomization and blinding

To reduce the risk of bias during the assessment, after completion of the baseline assessment we will allocate eligible patients randomly either m-health or integral groups into three randomization waves, using computer-generated numbers (EPIDAT 3.1, Xunta de Galicia). An external member will introduce the sequence in sealed opaque envelopes. Assessment staff will be blinded to patients' randomization assignment and the staff responsible of the rehabilitation program will not be able to change any assignment. After the 6-month follow-up period, and because of ethical implications, once the last outcome variable has been measured we will invite participants of the m-health group to participate into the face-to-face rehabilitation program.

Integral group

The intervention will be implemented by the CUIDATE research group. The supervised face-to-face program



involves two parts (8 weeks in total). The participants will may use the BENECA System (mobile app) daily, which aims to recover a healthy lifestyle in BCS (in terms of energy balance: physical activity and dietary). On the second day of the assessment, staff will install the app on the participants' mobile phones and will train them to use it. Furthermore, the women will receive telephone calls and text messages (as required) to resolve any questions and provide suggestions, and a video tutorial on how to use the application is also available on the web.

Moreover, participant will receive a supervised face-to-face rehabilitation program. This intervention consists of a supervised-occupational therapy rehabilitation program at the iMUDS centre (Mixed Institute University Sport and Health). Because there is no information about the ideal occupational therapy program for breast cancer patients, we have developed a comprehensive program that covers most of the physical, cognitive and emotional needs of these patients after oncology treatment from the occupational therapy perspective.

The second part is based on the fact that this span has been used in previous RCTs that have similar outcomes and samples [9, 18]. The occupational therapy program

includes 3 weekly sessions of 60 to 90 min each. The weekly sessions will be distributed as follows: 2 sessions/week in a ROM-cognitive subprogram (approximately 50 min/session) using therapeutic workshops and individualized treatment that focus on improving the ROM, muscle strength and endurance, and manipulative skill and energy conservation as well as cognitive activities; 3 sessions/week of a psychomotricity program (approximately 45 min/session) including activities to improve functional capacity and address fatigue and pain as well as a warm-up period and relaxation techniques; and finally, 1 session/week of a psychosocial intervention (approximately 30 min/session), working on areas of ergonomics, techniques of energy conservation and fatigue management, job anxiety, coping techniques and occupational balance. All of these exercises will be assigned to women in the integral group according to their perceived needs at the baseline assessment. These needs will be established based on the fatigue levels, pain, functional capacity, ROM, and distress levels reported by the patients. Therefore, each participant will receive individual and progressive training (for example, the number and type of exercises, series, repetitions and so on). Efforts will be made to prevent the integral group from receiving additional physical care.

M-HEALT: BENECA APP system

BENECA asks users to register their food and drinks and the different activities performed during the previous day. With an open structure and four time periods, the application will take the form of a questionnaire on the diet (over the last 24 h) and a record of daily activities in terms of duration and intensity. Users also record their weight (kg) and height (cm). After entering the information, the system will provide the patient information about their energy balance and general recommendations on physical activity according to their individual profile, using the reference guide for exercise in cancer patients from the American College of Sports Medicine [68]. Additionally, it provides recommended substitutions for foods that are considered potentially carcinogenic with others that may have a protective capacity against cancer, according to the guidelines of the American Cancer Society [11, 69] and the recommendations of the WCRF about the consumption of food of plant and animal origins, food with low energy density, etc. Furthermore, the program also detects the presence of an energy imbalance.

Telephone calls

The CUIDATE group will make the telephone calls and send messages of encouragement. On the one hand, with this calls, participants will be able to solve any problems with the usage of BENECA app. Moreover, we will check the patients' improvement and satisfaction. On the other hand, the aim of messages will be to stimulate not only the adherence with BENECA app but also with the program.

M-Health group

Because it is a study of therapeutic superiority, the m-health group will use the BENECA app for 2 months and will receive some general recommendations about healthy lifestyle, stress management and occupational balance in paper format. After completion of this study, the m-health participants will be given the opportunity to participate in the supervised face-to-face program due to the ethical concerns of the CUIDATE group. The data obtained will be not used in this study.

Data analysis

All analyses will be carried out using STATA/SE 14.0 (StataCorp, College Station, TX, USA) or using Statistical Program for Social Sciences (IBM® SPSS® Statistic version 20, Corp., Armonk, NY). We will check the normal distribution of variables with Kolmogorov-Smirnov and Shapiro-Wilk test, as appropriate, and the differences at baseline between groups with Chi-square test or Student *t*-test, as appropriate. The main analysis will be repeated measures analyses of the covariance (ANCOVA) with age, type of surgery, tumour stage and time since

diagnosis as covariates. Intergroup effect sizes will be calculated to provide change magnitude information. We will use the intention-to-treat principle for all analyses.

Discussion

This RCT will investigate whether there are clinically relevant differences in improvements in the QoL of BCS between an integral strategy and the use of the m-health system alone. This study has been designed to address the new needs for support and treatment of breast cancer survivors, reflecting the emerging need to merge new, low cost treatment options with the much-needed involvement of health professionals in the treatment of this type of patients. The supervised program includes not only strengthening and range of motion exercises of the shoulder, which are necessary in these patients [9], but also features a cognitive [25] and psychosocial [27] approach in a single intervention program which, together with the use of the m-health application [17], provides the integral character of the project.

In addition, most studies in cancer patients have been conducted with a rehabilitation team comprising nurses, psychologists and physiotherapists [8, 27]. For this reason, we chose to use a supervised face-to-face rehabilitation program conducted by an occupational therapist, due to the holistic and integrative approach of the discipline. Although we expect to see improvements in the primary outcome in both groups, we hypothesize that the combination of the supervised program and the m-health system will cause significant differences in QoL compared with the m-health group. QoL improvement is considered an indicator of cancer rehabilitation success [70]. If this integral option is effective, it will highlight the need for health systems to include disciplines such as occupational therapy in the supportive care of cancer patients during the survival period, as well as the potential advantage and cost reduction provided using a mobile app. Moreover, the results of this study could garner support for the use of this type of strategy in an increasing number of 17.8 million cancer patients in the European Union [71], with a high proportion of them claiming adequate rehabilitation services.

Abbreviations

App: Mobile application; AROM: Active range of motion; BCS: Breast cancer survivors; DASH: Disabilities of the arm, shoulder and hand; EORT QLQ-BR23: European Organization for Research and Treatment of Cancer Breast Cancer-Specific Quality of Life Questionnaire; EORTC QLQ-C30: European Organization for Research and Treatment of Cancer Quality of Life Questionnaire Core (30); HADS: Hospital anxiety and depression scale; HRQoL: Health-related quality of life; m-Health: Mobile health application; QoL: Quality of life; RCT: Randomized controlled trial; ROM: Range of motion; TMT: Trail making test; VREM: Short version of the Minnesota leisure time physical activity questionnaire; WAIS-IV: Wechsler adult intelligence scale

Acknowledgement

Not applicable.

Funding

The study was funded by the Spanish Ministry of Economy and Competitiveness (Plan Estatal de I + D + I 2013-2016), Fondo de Investigación Sanitaria del Instituto de Salud Carlos III (PI14/01627), Fondos Estructurales de la Unión Europea (FEDER) and by the Spanish Ministry of Education (FPU14/01069). This is part of a Ph.D. Thesis conducted in the Clinical Medicine and Public Health Doctoral Studies of the University of Granada, Spain.

Availability of data and materials

The datasets used and/or analysed during the current study available from the corresponding author on reasonable request.

Authors' contributions

MAM conceived the study, designed BENECA App, and drafted the manuscript. NGC, LMM, ICV, CFL, and MLL participated in the study design and planned the statistical analysis of data. NGC, LMM, FAS and MLL designed the diary sessions of supervised face-to-face intervention. ICV, CFL, and FAS give considerable facility to relation between hospital centres and university laboratories. CSS and MAM advised on the medical aspect of the protocol and participated in the enrolment of the patients to the study. All authors read and approved the final manuscript.

Authors' information

MLL is occupational therapist and is a lecturer at University of Granada and this project represents his PhD thesis topic. His particular interest has been the give support to breast cancer during rehabilitation phase. LMM is occupational therapist and NGC and CFL are physiotherapist and they are academic, working and researching the area of oncology rehabilitation. ICV is physical exercise specialists, physiotherapist and academic researching in the area of exercise in oncology patients. FAS is physiotherapist and PhD student, involves in research with breast cancer survivors. CSS is nurse and academic involves in research with cancer survivors. MAM is a sports physician and physiotherapist working as research leader in this project and supervisor of PhD thesis.

Competing interests

The authors declare that they have no competing interests.

Consent for publication

Not applicable.

Ethics approval and consent to participate

This trial was approved by Research Ethics Committee (Granada, Spain) and it was performed in accordance with the HELSINKI Declaration (last modification in 2000) and The Biomedical Research (14/2007). All participants provided written informed consent.

Author details

¹Department Physical Therapy, University of Granada, Granada, Spain. ²Mixed University Sport and Health Institute (iMUDS), Granada, Spain. ³Institute for Biomedical Research ibs.GRANADA, University Hospital Complex of Granada/ University of Granada, Granada, Spain. ⁴Breast Oncology Unit, Virgen de las Nieves Hospital, Granada, Spain.

Received: 1 November 2016 Accepted: 22 November 2016

Published online: 25 November 2016

References

- Jemal A, Vineis P, Bray F, et al. The Cancer Atlas. In: American Center Society, editor. 2nd ed. Atlanta: Ahmedin Jemal; 2014.
- Bray F, Jemal A, Torre LA, Forman D, Vineis P. Long-term realism and cost-effectiveness: primary prevention in combatting cancer and associated inequalities worldwide. *J Natl Cancer Inst.* 2015;107:djv273. <http://dx.doi.org/10.1093/jnci/djv273>.
- Smith SL, Singh-Carlson S, Downie L, Payeur N, Wai ES. Survivors of breast cancer: patient perspectives on survivorship care planning. *J Cancer Surviv.* 2011;5:337–44. <https://dx.doi.org/10.1007/s11764-011-0185-7>.
- Ganz PA, Yip CH, Gralow JR, Distelhorst SR, Albain KS, Andersen BL, et al. Supportive care after curative treatment for breast cancer (survivorship care): resource allocations in low- and middle-income countries. *A Breast Health Global Initiative 2013 consensus statement.* *Breast.* 2013;22:606–15. <http://dx.doi.org/10.1016/j.breast.2013.07.049>.
- Miaskowski C, Paul SM, Cooper B, West C, Levine JD, Elboim C, et al. Identification of patient subgroups and risk factors for persistent arm/shoulder pain following breast cancer surgery. *Eur J Oncol Nurs.* 2014;18:242–53. <http://dx.doi.org/10.1016/j.ejon.2013.12.002>.
- Galiano-Castillo N, Ariza-García A, Cantarero-Villanueva I, Fernández-Lao C, Díaz-Rodríguez L, Arroyo-Morales M. Depressed mood in breast cancer survivors: Associations with physical activity, cancer-related fatigue, quality of life, and fitness level. *Eur J Oncol Nurs.* 2014;18:206–10. <http://dx.doi.org/10.1016/j.ejon.2013.10.008>.
- Cantarero-Villanueva I, Fernández-Lao C, Fernández-De-Las-Peñas C, Díaz-Rodríguez L, Sanchez-Cantalejo E, Arroyo-Morales M. Associations among musculoskeletal impairments, depression, body image and fatigue in breast cancer survivors within the first year after treatment. *Eur J Cancer Care (Engl).* 2011;20:632–9. <https://dx.doi.org/10.1111/j.1365-2354.2011.01245.x>.
- Cantarero-Villanueva I, Sánchez-Jiménez A, Galiano-Castillo N, Díaz-Rodríguez L, Martín-Martín L, Arroyo-Morales M. Effectiveness of lumbopelvic exercise in colon cancer survivors. *Med Sci Sport Exerc.* 2016;48(8):1438–46. <https://dx.doi.org/10.1249/MSS.0000000000000917>.
- Fernández-Lao C, Cantarero-Villanueva I, Ariza-García A, Courtney C, Fernández-de-las-Peñas C, Arroyo-Morales M. Water versus land-based multimodal exercise program effects on body composition in breast cancer survivors: a controlled clinical trial. *Support Care Cancer.* 2013;21:521–30. <https://dx.doi.org/10.1007/s00520-012-1549-x>.
- Bourke L, Homer KE, Thaha MA, Steed L, Rosario DJ, Robb KA, et al. Interventions to improve exercise behaviour in sedentary people living with and beyond cancer: a systematic review. *Br J Cancer.* 2014;110:831–41. <https://dx.doi.org/10.1038/bjc.2013.750>.
- Rock CL, Doyle C, Demark-Wahnefried W, Meyerhardt J, Courneya KS, Schwartz AL, et al. Nutrition and physical activity guidelines for cancer survivors. *CA Cancer J Clin.* 2012;62:243–74. <https://dx.doi.org/10.3322/caac.21142>.
- Hudis C a, Jones L. Promoting exercise after a cancer diagnosis: easier said than done. *Br J Cancer.* 2014;110:829–30. <https://dx.doi.org/10.1038/bjc.2014.12>.
- Khandekar MJ, Cohen P, Spiegelman BM. Molecular mechanisms of cancer development in obesity. *Nat Rev Cancer.* 2011;11:886–95. <http://dx.doi.org/10.1038/nrc3174>.
- Stout NL, Binkley JM, Schmitz KH, Andrews K, Hayes SC, Campbell KL, et al. A prospective surveillance model for rehabilitation for women with breast cancer. *Cancer.* 2012;118:2191–200. <http://doi.wiley.com/10.1002/ncr.27476>.
- Haines TP, Sinnamon P, Wetzig NG, Lehman M, Walpole E, Pratt T, et al. Multimodal exercise improves quality of life of women being treated for breast cancer, but at what cost? Randomized trial with economic evaluation. *Breast Cancer Res Treat.* 2010;124:163–75. <https://dx.doi.org/10.1007/s10549-010-1126-2>.
- McCue M, Fairman A, Pramuka M. Enhancing quality of life through telerehabilitation. *Phys Med Rehabil Clin N Am.* 2010;21:195–205. <https://dx.doi.org/10.1016/j.pmr.2009.07.005>.
- Hillier F, Batterham A, Crooks S, Moore HJ, Summerbell CD. The development and evaluation of a novel Internet-based computer program to assess previous-day dietary and physical activity behaviours in adults: the Synchronised Nutrition and Activity Program for Adults (SNAPATM). *Br J Nutr.* 2012;107:1221–31. <http://dx.doi.org/10.1017/S0007114511004090>.
- Galiano-Castillo N, Ariza-García A, Cantarero-Villanueva I, Fernández-Lao C, Díaz-Rodríguez L, Legerén-Alvarez M, et al. Telehealth system (e-CUIDATE) to improve quality of life in breast cancer survivors: rationale and study protocol for a randomized clinical trial. *Trials.* 2013;14:187. <https://dx.doi.org/10.1186/1745-6215-14-187>.
- Johansen S, Fosså K, Nesvold IL, Malinen E, Fosså SD. Arm and shoulder morbidity following surgery and radiotherapy for breast cancer. *Acta Oncol.* 2014;53:521–9. <https://dx.doi.org/10.3109/0284186X.2014.880512>.
- Kootstra JJ, Dijkstra PU, Rietman H, De Vries J, Baas P, Geertzen JHB, et al. A longitudinal study of shoulder and arm morbidity in breast cancer survivors 7 years after sentinel lymph node biopsy or axillary lymph node dissection. *Breast Cancer Res Treat.* 2013;139:125–34. <https://dx.doi.org/10.1007/s10549-013-2509-y>.
- Brookham RL, Dickerson CR. Comparison of humeral rotation co-activation of breast cancer population and healthy shoulders. *J Electromyogr Kinesiol.* 2016;29:100–6. <http://dx.doi.org/10.1016/j.jelekin.2015.07.002>.
- Yim Loh Aisya Nadia Musa S, Yim Loh S. Methods to improve rehabilitation of patients following breast cancer surgery: a review of systematic reviews. 2015;81–98. <https://dx.doi.org/10.2147/BCTT.S47012>.

23. Rizzi SKL de A, Haddad CAS, Giron PS, Pinheiro TL, Nazário ACP, Facina G. Winged scapula incidence and upper limb morbidity after surgery for breast cancer with axillary dissection. *Support Care Cancer*. 2016;24(6):2707–15. <https://dx.doi.org/10.1007/s00520-016-3086-5>.
24. Fisher B, Anderson S, Bryant J, Margolese R, Deutsch M, Fisher ER, et al. Twenty-year follow-up of a randomized trial comparing total for the treatment of invasive breast cancer. *N Engl J Med*. 2002;347:1233–41. <https://dx.doi.org/10.1056/NEJMoa022152>.
25. Poppelreuter M, Weis J, Bartsch HH. Effects of specific neuropsychological training programs for breast cancer patients after adjuvant chemotherapy. *J Psychosoc Oncol*. 2009;27:274–96. <https://dx.doi.org/10.1080/07347330902776044>.
26. Pyszel A, Malyszczak K, Pyszel K, Andrzejak R, Szuba A. Disability, psychological distress and quality of life in breast cancer survivors with arm lymphedema. *Lymphology*. 2006;39:185–92.
27. Turner J, Kelly B, Clarke D, Yates P, Aranda S, Jolley D, et al. A randomised trial of a psychosocial intervention for cancer patients integrated into routine care: the PROMPT study (promoting optimal outcomes in mood through tailored psychosocial therapies). *BMC Cancer*. 2011;11:48. <https://dx.doi.org/10.1186/1471-2407-11-48>.
28. Martín-Martín LM, Valenza-Demet G, Ariza-Vega P, Valenza C, Castellote-Caballero Y, Juan Jiménez-Moleón J. Effectiveness of an occupational therapy intervention in reducing emotional distress in informal caregivers of hip fracture patients: a randomized controlled trial. *Clin Rehabil NEIU Ronald Williams Libr*. 2014;28:772–83. <https://dx.doi.org/10.1177/0269215513519343>.
29. Sackley CM, Walker MF, Burton CR, Watkins CL, Mant J, Roalfe AK, et al. An occupational therapy intervention for residents with stroke related disabilities in UK care homes (OTCH): cluster randomised controlled trial. *BMJ*. 2015;350:h468. <http://dx.doi.org/10.1136/bmj.h468>.
30. Macedo AM, Oakley SP, Panayi GS, Kirkham BW. Functional and work outcomes improve in patients with rheumatoid arthritis who receive targeted, comprehensive occupational therapy. *Arthritis Care Res*. 2009;61:1522–30. <https://dx.doi.org/10.1002/art.24563>.
31. Hegel MT, Lyons KD, Hull JG, Kaufman P, Urquhart L, Li Z, et al. Feasibility study of a randomized controlled trial of a telephone-delivered problem-solving-occupational therapy intervention to reduce participation restrictions in rural breast cancer survivors undergoing chemotherapy. *Psychooncology*. 2011;20:1092–101. <https://dx.doi.org/10.1002/pon.1830>.
32. Brandt A, Pilegaard MS, Oestergaard LG, Lindahl-Jacobsen L, Sørensen J, Johnsen AT, et al. Effectiveness of the “Cancer Home-Life Intervention” on everyday activities and quality of life in people with advanced cancer living at home: a randomised controlled trial and an economic evaluation. *BMC Palliat Care BMC Palliative Care*. 2016;15:10. <https://dx.doi.org/10.1186/s12904-016-0084-9>.
33. Nieuwenhuijsen K, Bos-Ransdorp B, Uitterhoeve LLJ, Sprangers MAG, Verbeek JHAM. Enhanced Provider Communication and Patient Education Regarding Return to Work in Cancer Survivors Following Curative Treatment: A Pilot Study. *J Occup Rehabil*. 2006;16:647–57. <https://dx.doi.org/10.1007/s10926-006-9057-9>.
34. Lemoignan J, Chasen M, Bhargava R. A retrospective study of the role of an occupational therapist in the cancer nutrition rehabilitation program. *Support Care Cancer*. 2010;18:1589–96. <https://dx.doi.org/10.1007/s00520-009-0782-4>.
35. Miller J, Hopkinson C. A retrospective audit exploring the use of relaxation as an intervention in oncology and palliative care. *Eur J Cancer Care (Engl)*. 2008;17:488–91. <https://dx.doi.org/10.1111/j.1365-2354.2007.00899.x>.
36. Harrison-paul J, Drummond AER. A Randomised Controlled Trial of Occupational Therapy in Oncology: Challenges in Conducting a Pilot Study. *Br J Occup Ther*. 2006;69:130–3. <https://dx.doi.org/10.1111/j.1365-2354.2007.00899.x>.
37. Huang ME, Wartella JE, Kreutzer JS. Functional outcomes and quality of life in patients with brain tumors: A preliminary report. *Arch Phys Med Rehabil*. 2001;82:1540–6. <https://dx.doi.org/10.1053/apmr.2001.26613>.
38. Kasven-Gonzalez N, Souverain R, Miale S. Improving quality of life through rehabilitation in palliative care: Case report. *Palliat Support Care*. 2010;8:359–69. <https://dx.doi.org/10.1017/S1478951510000167>.
39. Salas-Salvadó J, Rubio M a, Barbany M, Moreno B. Consenso SEEDO 2007 para la evaluación del sobrepeso y la obesidad y el establecimiento de criterios de intervención terapéutica. *Med Clin (Barc)*. 2007;128:184–96.
40. Aaronson NK, Ahmedzai S, Bergman B, Bullinger M, Cull A, Dues NJ, et al. The European Organization for Research and Treatment of Cancer QLQ-C30: a quality-of-life instrument for use in international clinical trials in oncology. *J Natl Cancer Inst*. 1993;85:365–76.
41. Fayers P, Aaronson N, Bjordal K, Groenvold M, Curran D, Bottomley A. The EORTC QLQ-C30 Scoring Manual. Third Edit. Brussels: European Organisation for Research and Treatment of Cancer; 2001.
42. Sprangers MA, Groenvold M, Arraras JI, Franklin J, te Velde A, Muller M, et al. The European Organization for Research and Treatment of Cancer breast cancer-specific quality-of-life questionnaire module: first results from a three-country field study. *J Clin Oncol*. 1996;14:2756–68.
43. Leahy S, Toomey C, McCreesh K, O'Neill C, Jakeman P. Ultrasound measurement of subcutaneous adipose tissue thickness accurately predicts total and segmental body fat of young adults. *Ultrasound Med Biol*. 2012;38:28–34. <https://dx.doi.org/10.1016/j.ultrasmedbio.2011.10.011>.
44. Wilkinson JM, Morris RM, Martin-Fernandez MA, Pozo JM, Frangi AF, Maheson M, et al. Use of high resolution dual-energy x-ray absorptiometry-region free analysis (DXA-RFA) to detect local periprosthetic bone remodeling events. *J Orthop Res*. 2015;33:712–6. <https://dx.doi.org/10.1002/jor.22823>.
45. Greenspan SL, Vujevich KT, Brufsky MA, Lembersky BC, Londen GKV, Jankowitz RC, et al. Prevention of bone loss with risedronate in breast cancer survivors: a randomized, controlled clinical trial. *Osteoporos Int*. 2015;26:1857–64. <https://dx.doi.org/10.1007/s00198-015-3100-7>.
46. Winters-Stone KM, Dobek J, Nail LM, Bennett JA, Leo MC, Torgirson-Ojerio B, et al. Impact + resistance training improves bone health and body composition in prematurely menopausal breast cancer survivors: a randomized controlled trial. *Osteoporos Int*. 2013;24:1637–46. <https://dx.doi.org/10.1007/s00198-012-2143-2>.
47. Ruiz-Ruiz J, Mesa JLM, Gutiérrez A, Castillo MJ. Hand size influences optimal grip span in women but not in men. *J Hand Surg [Am]*. 2002;27:897–901.
48. España-Romero V, Ortega FB, Vicente-Rodríguez G, Artero EG, Rey JP, Ruiz JR. Elbow position affects handgrip strength in adolescents: validity and reliability of Jamar, DynEx, and TKK dynamometers. *J Strength Cond Res*. 2010;24:272–7. <https://dx.doi.org/10.1519/JSC.0b013e3181b296a5>.
49. Hudak PL, Amadio PC, Bombardier C. Development of an upper extremity outcome measure: the DASH (disabilities of the arm, shoulder and hand) [corrected]. The Upper Extremity Collaborative Group (UECG). *Am J Ind Med*. 1996;29:602–8. [https://dx.doi.org/10.1002/\(SICI\)1097-0274\(199606\)29:6<602::AID-AJIM4%3E3.0.CO;2-L](https://dx.doi.org/10.1002/(SICI)1097-0274(199606)29:6<602::AID-AJIM4%3E3.0.CO;2-L).
50. Harrington S, Michener LA, Kendig T, Miale S, George SZ. Patient-Reported Shoulder Outcome Measures Utilized in Breast Cancer Survivors: A Systematic Review. *Arch Phys Med Rehabil*. 2014;95:153–62. <https://dx.doi.org/10.1016/j.apmr.2013.07.022>.
51. Gummesson C, Atroshi I, Ek Dahl C. The disabilities of the arm, shoulder and hand (DASH) outcome questionnaire: longitudinal construct validity and measuring self-rated health change after surgery. *BMC Musculoskelet Disord*. 2003;4:11. <https://dx.doi.org/10.1186%2F1471-2474-4-11>.
52. Teresa Hervás M, Navarro Collado MJ, Peiró S, Rodrigo Pérez JL, López Matéu P, Martínez Tello I. Versión española del cuestionario DASH. Adaptación transcultural, fiabilidad, validez y sensibilidad a los cambios. *Med. Clin. (Barc)*. 2006;127:441–7. <https://dx.doi.org/10.1157/13093053>.
53. Constant CR, Murley AH. A clinical method of functional assessment of the shoulder. *Clin Orthop Relat Res*. 1987;160–4. [cited 2016 Feb 3].
54. Kaufman AS, Lichtenberger EO. Assessing Adolescent and Adult Intelligence [Internet]. 3rd ed. 2005.
55. Wechsler D. Wechsler Adult Intelligence Scale-Fourth Edition (WAIS-IV). San Antonio: Psychological Corporation; 2008.
56. Tombaugh TN. Trail Making Test A and B: normative data stratified by age and education. *Arch Clin Neuropsychol*. 2004;19:203–14. [https://dx.doi.org/10.1016/S0887-6177\(03\)00039-8](https://dx.doi.org/10.1016/S0887-6177(03)00039-8).
57. Herrero MJ, Blanch J, Peri JM, De Pablo J, Pintor L, Bulbena A. A validation study of the hospital anxiety and depression scale (HADS) in a Spanish population. *Gen Hosp Psychiatry*. 2003;25:277–83.
58. Zigmond AS, Snaith RP. The hospital anxiety and depression scale. *Acta Psychiatr Scand*. 1983;67:361–70.
59. Ruiz Comellas A, Pera G, Baena Díez JM, Mundet Tudurí X, Alzamora Sas T, Elosua R, et al. Validation of a Spanish short version of the Minnesota leisure time physical activity questionnaire (VREM). *Rev Esp Salud Publica*. 2012;86:495–508. http://scielo.isciii.es/scielo.php?script=sci_arttext&pid=S1135-57272012005500004&lng=es&nrm=iso.
60. Pereira MA, FitzerGerald SJ, Gregg EW, Joswiak ML, Ryan WJ, Suminski RR, et al. A collection of Physical Activity Questionnaires for health-related research. *Med Sci Sports Exerc*. 1997;29:S1–205.
61. Fernández Cabrera T, et al. Guía de uso de la escala de Autoeficacia para la actividad física. Consejería de Salud y Bienestar Social, editor. Junta de Andalucía. Sevilla; 2012.

62. Fernández Cabrera T, Medina Anzano S, María Herrera Sánchez I, Rueda Méndez S, Fernández Del Olmo A. Construcción y validación de una escala de autoeficacia para la actividad física. *Rev Esp Salud Publica*. 2011;85:405–17. http://scielo.isciii.es/scielo.php?script=sci_arttext&pid=S1135-57272011004400009.
63. Carbonell-Baeza A, Ruiz JR, Aparicio VA, Ortega FB, Munguía-Izquierdo D, Alvarez-Gallardo IC, et al. Land- and water-based exercise intervention in women with fibromyalgia: the al-Andalus physical activity randomised controlled trial. *BMC Musculoskelet Disord*. 2012;13:18. <https://dx.doi.org/10.1186/1471-2474-13-18>.
64. Torres Lacomba M, Yuste Sánchez MJ, Zapico Goñi A, Prieto Merino D, Mayoral del Moral O, Cerezo Téllez E, et al. Effectiveness of early physiotherapy to prevent lymphoedema after surgery for breast cancer: randomised, single blinded, clinical trial. *BMJ*. 2010;340:b5396. <http://dx.doi.org/10.1136/bmj.b5396>.
65. Karges JR, Mark BE, Stikeleather SJ, Worrell TW. Concurrent validity of upper-extremity volume estimates: comparison of calculated volume derived from girth measurements and water displacement volume. *Phys Ther*. 2003;83:134–45.
66. Taylor R, Jayasinghe UW, Koelmeyer L, Ung O, Boyages J. Reliability and validity of arm volume measurements for assessment of lymphedema. *Phys Ther*. 2006;86:205–14.
67. Osoba D, Rodrigues G, Myles J, Zee B, Pater J. Interpreting the significance of changes in health-related quality-of-life scores. *J Clin Oncol*. 1998;16:139–44.
68. Schmitz KH, Courneya KS, Matthews C, Demark-Wahnefried W, Galvão D a, Pinto BM, et al. American college of sports medicine roundtable on exercise guidelines for cancer survivors. *Med Sci Sports Exerc*. 2010;42:1409–26. <https://dx.doi.org/10.1249/MSS.0b013e3181e0c112>.
69. Demark-wahnefried W, Bandera EV, Gapstur S, Patel AV. American Cancer Society Guidelines on nutrition and physical activity for cancer prevention reducing the risk of cancer with healthy food choices and physical activity. *CA Cancer J Clin*. 2012;62:30–67.
70. Baili P, Hoekstra-Weebers J, Van Hoof E, Bartsch HH, Travado L, Garami M, et al. Cancer rehabilitation indicators for Europe. *Eur J Cancer*. 2013;49:1356–64. <http://dx.doi.org/10.1016/j.ejca.2012.10.028>.
71. Gatta G, Van Der Zwan JM, Casali PG, Siesling S, Dei Tos AP, Kunkler I, et al. Rare cancers are not so rare: The rare cancer burden in Europe. *Eur J Cancer*. 2011;47:2493–511. <https://dx.doi.org/10.1016/j.ejca.2011.08.008>.

Submit your next manuscript to BioMed Central and we will help you at every step:

- We accept pre-submission inquiries
- Our selector tool helps you to find the most relevant journal
- We provide round the clock customer support
- Convenient online submission
- Thorough peer review
- Inclusion in PubMed and all major indexing services
- Maximum visibility for your research

Submit your manuscript at
www.biomedcentral.com/submit

